

March 2024

# The Global Connection

A publication of the Global Education Program at Skyline School



## **PARENT CONFERENCES (March 11-15)**

The Global Education teachers are looking forward to meeting with you during the week of March 11-15 to discuss your child's academic and social progress. We are keeping our conference schedule from the fall to maintain the preferred meeting times as well as to keep the back-to-back sibling conferences. During conferences, the Global Education teachers will be checking with parents about the 2024-2025 school year. As part of our effort to finalize our numbers prior to the registration period, we need to know if your child will be part of the program next year. Also, if your family is considering a change from one strand to the other (i.e., from SSL to monolingual), you must obtain the strand change request form from Skyline's office and submit the completed form to Skyline's office by Friday, March 22nd. Students with siblings interested in joining Global Ed in the fall of 2024 must complete a registration form and return it to the office by March 22nd. \*NOTE: Skyline will follow a minimum day schedule with a normal start time and early dismissal next week. There will be a brief lunch break at school during conference week during which hot lunch will be available. Please plan on providing a snack/lunch for your child if your child will not be having the school lunch during conference week.

## **IMPORTANT DATES**

- **March 1:** Skyline's Talent Show, 6:30 pm in Skyline's Theater
- **March 11-15:** Parent conferences, Early dismissal at 12:17
- **March 11-15:** Skyline's Book Fair
- **March 13:** Skyline's Family STREAM night, 5:30-7 pm, Skyline's Theater, and blacktop
- **March 28:** Skyline's Move & Groove-a-thon
- **April 1-5:** Spring break



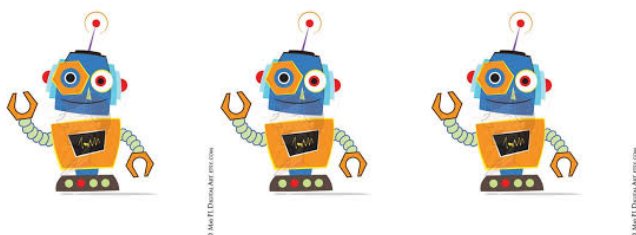
## **AN IMPORTANT REMINDER ABOUT PERSONAL DEVICES ON CAMPUS**

Skyline has a policy in place about the use of personal devices such as cellphones and Apple watches while at school. All devices are to be turned off and stored in children's backpacks once they enter the gates of the school. The devices are to remain in backpacks at all times during the school day and are not to be turned on again until children exit the gates of the school at afternoon dismissal. Cellphones and Apple watches are a significant distraction if accessed during the instructional day. The use of these electronic devices also poses a safety issue before kids exit the gate the end of the day. Please help us maintain a productive and safe learning space by reminding your children of the school policy regarding personal devices. Thanks!



## **FAMILY STREAM NIGHT AT SKYLINE March 13th 5:30-7:00 PM**

Skyline families are invited to attend family STREAM night on Wednesday, March 13th from 5:30-7:00 PM. The event will be held in Skyline's theater and on the blacktop. Come join us to participate in an augmented reality sandbox, art projects, robotics, and building activities. Skyline's Book Fair will also be open in the media center during the event. A food truck will be on the blacktop, and The Dad's Club will be serving ice cream. It promises to be an awesome event for kids (and adults) of all ages!



## **A WORD OR TWO ABOUT ASSESSMENT**

As we approach our parent conference week, teachers are busy collecting and organizing data about your child's learning. We in Global Ed consider this collection of data coupled with work samples to be a truer picture of a child's progress than sharing one test score with families. The teachers want to convey to parents patterns of learning over time as well as challenges and successes children face when learning new concepts. Stay tuned for more thoughts on testing and assessment in the April newsletter when grades 3-6 take the state standardized tests required of all public school students in California.



# PRIMARY GLOBAL EDUCATION NEWS

## DESERT ANIMAL POSTER REPORT

(March 18-March 22)

We have begun our study of the desert and the animals that inhabit it. Your child is to pick one animal that lives in the desert and create a poster report that includes:

- a picture of the animal (drawn, from a magazine or the Internet)
- a description of the animal in terms of size, and features
- a description of what the animal eats (its prey)
- a description of its habitat (where it lives in the desert)
- a description of its predators and how it protects itself
- any other interesting facts Remember to have your child write the poster in his/her own words.

## TOPIC SHARING SCHEDULE

- 3/4-3/8: Design a science experiment
- 3/11-3/15: Open sharing
- 3/18-3/22: Desert animal poster report
- 3/25-3/29: Open sharing
- 4/1-4/5: SPRING BREAK
- 4/8-4/12: Open sharing

## Design a Science Experiment (March 4-8)

From mixing potions to building contraptions, children love to experiment, and they love to do science. With your supervision, this science play can be informative to our students about some basic scientific processes. In STREAM and in class, we have been discussing the scientific process model. We have discussed that science is a way of thinking rather than an isolated packet of facts. We are emphasizing that experiments are done in order to collect data that can be analyzed (or thought about) later. The children need to be encouraged to observe things carefully and to work as independently as possible to come up with the “definition” required of their question and their method. Create a simple question for your child to use in his/her experiment. Here is an example: Question: Which fabric softener works best? This could be the question they construct: Does Downy or Softy Lofty work best? (Now they must define what “best” means) What does “best” mean? “Best” means it is the one that makes the fabric feel the softest. A record sheet for the science experiment should be completed and shared on your child’s sharing day.

# GLOBAL EDUCATION *Program*



The Global Education Program is currently accepting pre-registration applications for grades K-6 for the 2024-2025 school year.

## INFORMATION ON PRE-REGISTRATION:

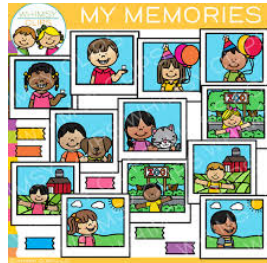
- The Global Education Program is an alternative, multi-age program within the Solana Beach School District.
- The pre-registration window is January 29th - March 22nd, 2024.
- Please use the QR Code here to access the program's website and pre-registration information.



Please direct questions to [estelaleidy@sbsd.net](mailto:estelaleidy@sbsd.net) (K-2 questions) or [lisacampbell@sbsd.net](mailto:lisacampbell@sbsd.net) (3-6 questions).

# Coming soon!

## A new and improved Global Ed website!



We are in the process of updating the Global Ed website to better reflect who we are and what we do. An important part of the update will be to include photos of our students engaging in day-to-day learning and participating in our big events. We are requesting permission from families to include photos of their children as part of our new Global Ed website. Completed forms may be returned to school. Thanks in advance for your support!

I give permission for photos of my child participating in Global Ed activities for use in the updated Global Ed website.

Child's name \_\_\_\_\_

Parent's signature \_\_\_\_\_

Date \_\_\_\_\_